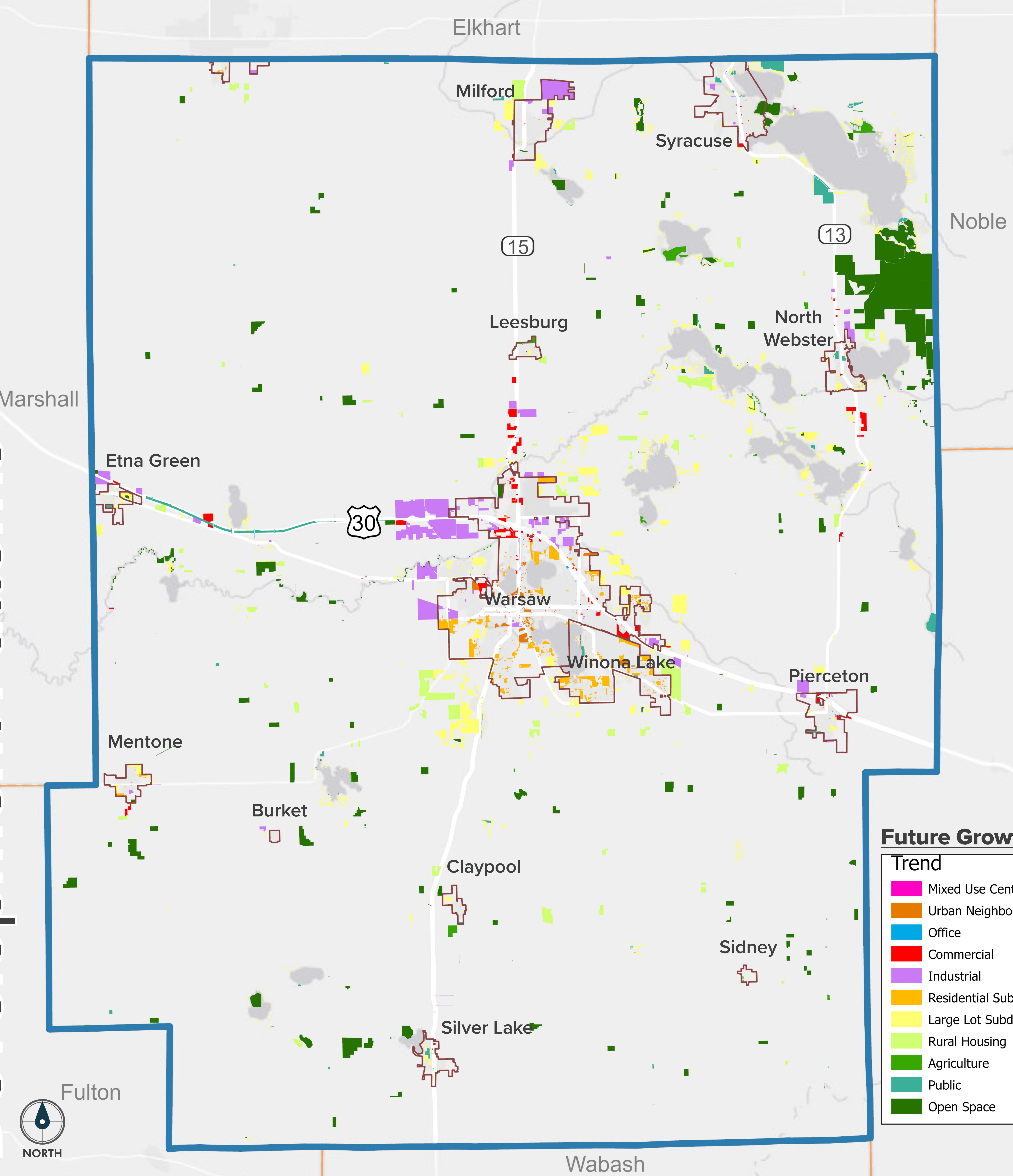


Growth Scenario 2: TRENDS CONTINUE

EXPLORING GROWTH AND DEVELOPMENT

This scenario looks at following current development trends, with most housing being built to the northeast of Warsaw and new jobs along Highway 30.

Development Patterns

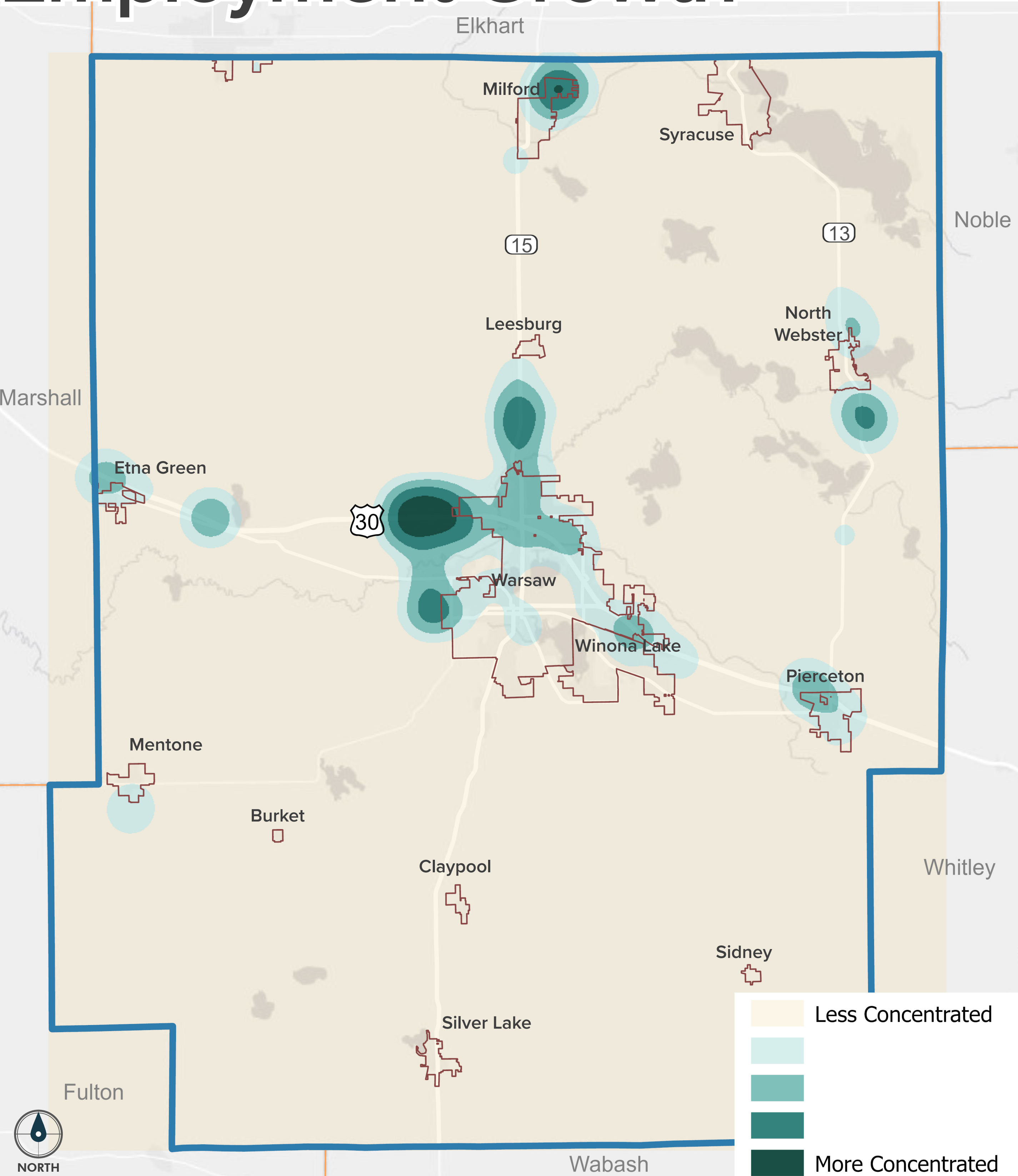


Growth Analysis: TRENDS CONTINUE

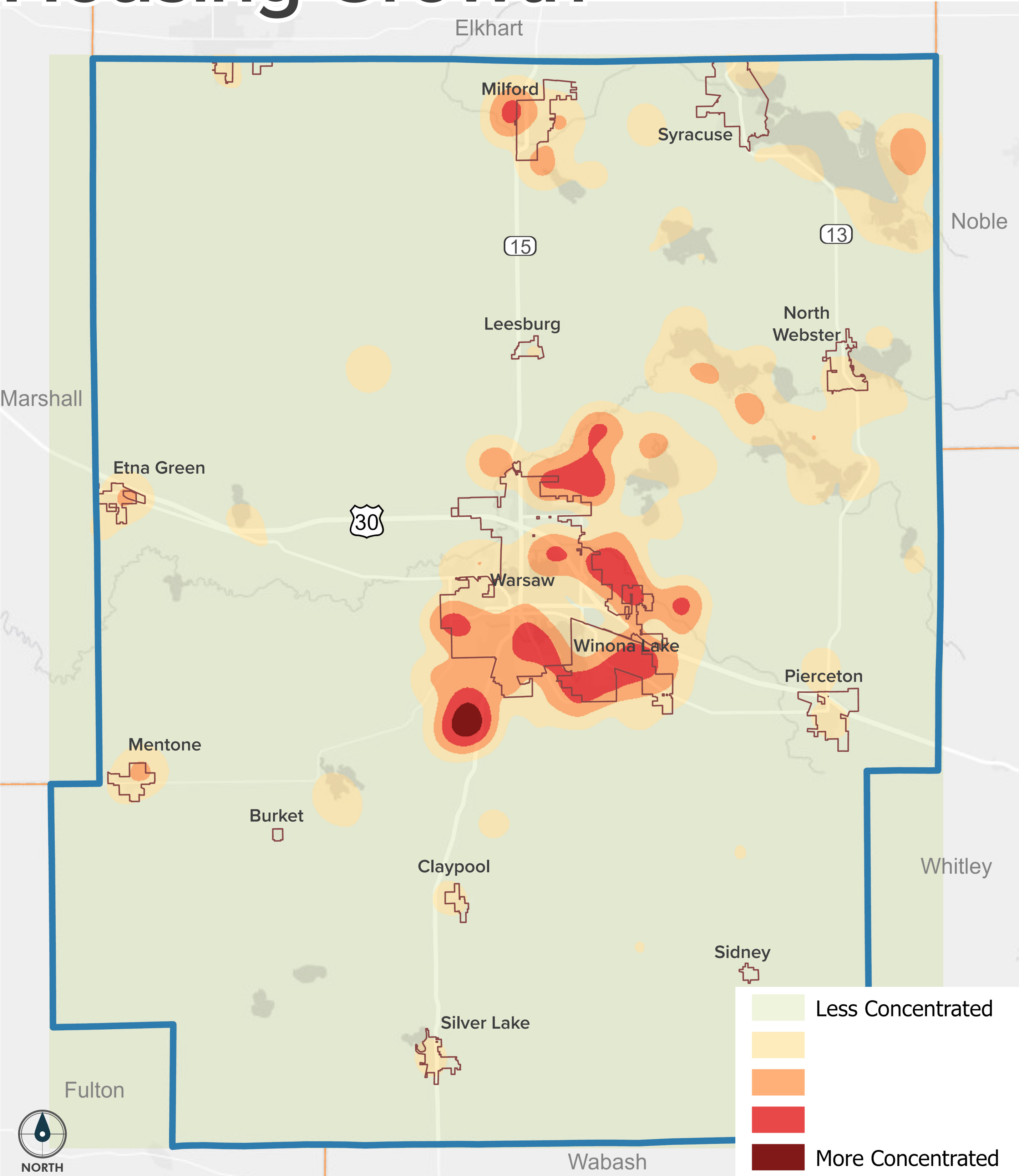
SCENARIO RESULTS

How does each scenario compare against the others when comparing projected demographics and economic statistics?

Employment Growth



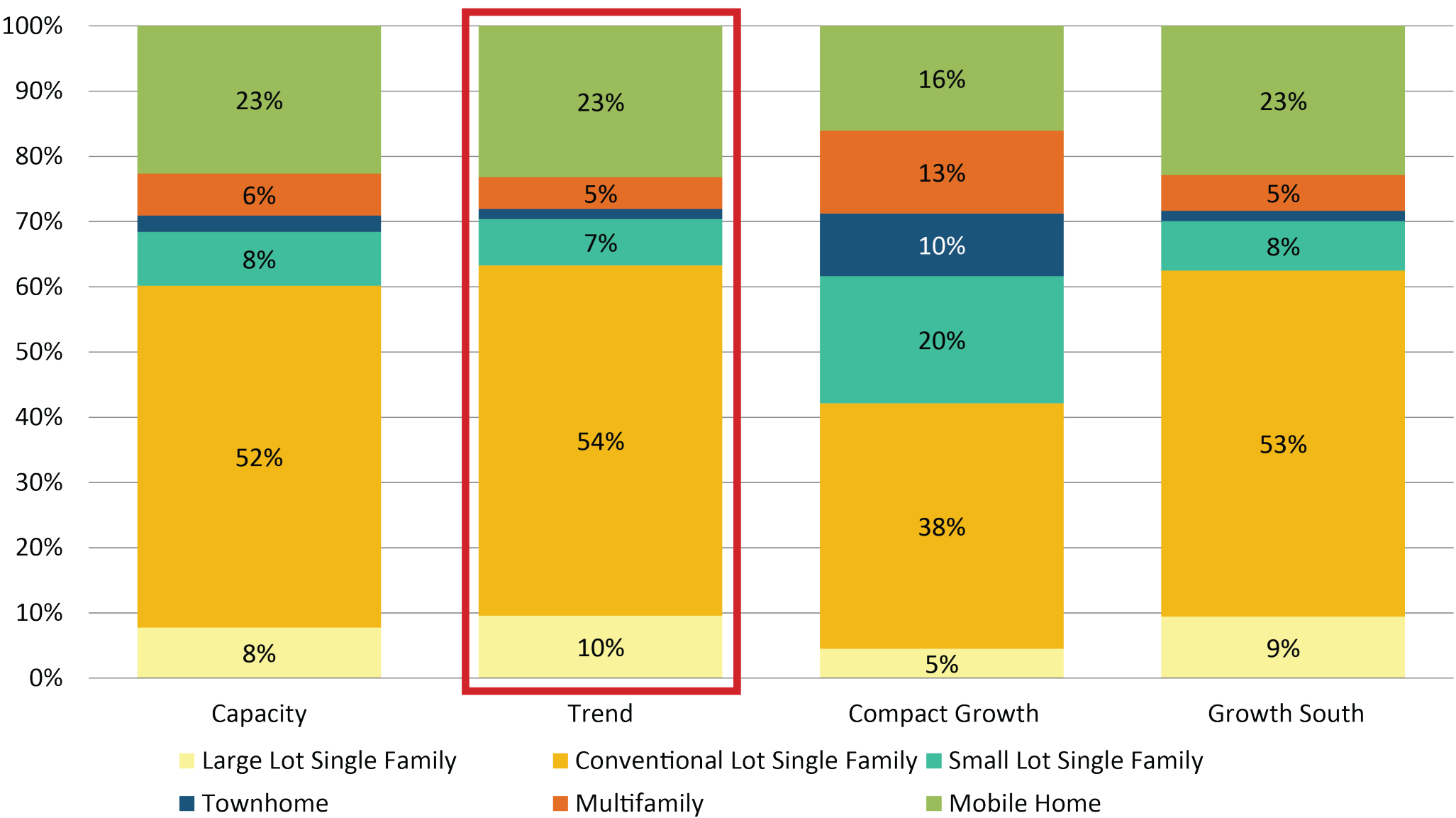
Housing Growth



- **EMPLOYMENT:** The Scenario 2 Trend employment heat map shows development related to work centers following current development patterns and trends. As such, there is a strong concentrated growth following US 30 between Etna Green and Pierceton, particularly at the Warsaw Industrial Park and northern boundary. Agricultural related employment east of Etna Green as well as the industrial area north of Milford and south of North Webster would also see additional employee related growth. Finally, additional employment growth is anticipated north along IN-15.

- **HOUSING:** This heat map illustrates housing development following Scenario 2 Trends of growth. As such, there is a strong focus of concentrated residential growth circling Warsaw and Winona lake with other areas of growth anticipated north of Milford, North Webster and other incorporated areas throughout the county.

Housing Mix



New Road Costs



Growth on Restricted AG

